



ControlPoint—Explore, Protect, Analyze and Control

IT departments are embracing Microsoft SharePoint™ as a simple answer to a host of business collaboration challenges. However, SharePoint farms can quickly become difficult to manage, as sites proliferate and become a nightmare for administrators. According to an article in CMS Watch, “Unfortunately, as you grow very large SharePoint environments, the controls that enterprises would want to see simply don’t exist natively within the platform.” Some of the most common challenges administrators face today include: poorly managed permissions leading to security gaps, uncontrolled growth of sites and site collections, limited visibility into user activity, depleted or poorly utilized SharePoint resources, and the need to centrally control users, sites, and site collections.

Introducing ControlPoint

ControlPoint gives you the ability to explore, protect, analyze and control your SharePoint environment. Specifically, ControlPoint helps you gain better control through comprehensive permissions management, in-depth activity and storage analysis, SharePoint content management, governance policy enforcement, and proactive management with alerts and notifications.

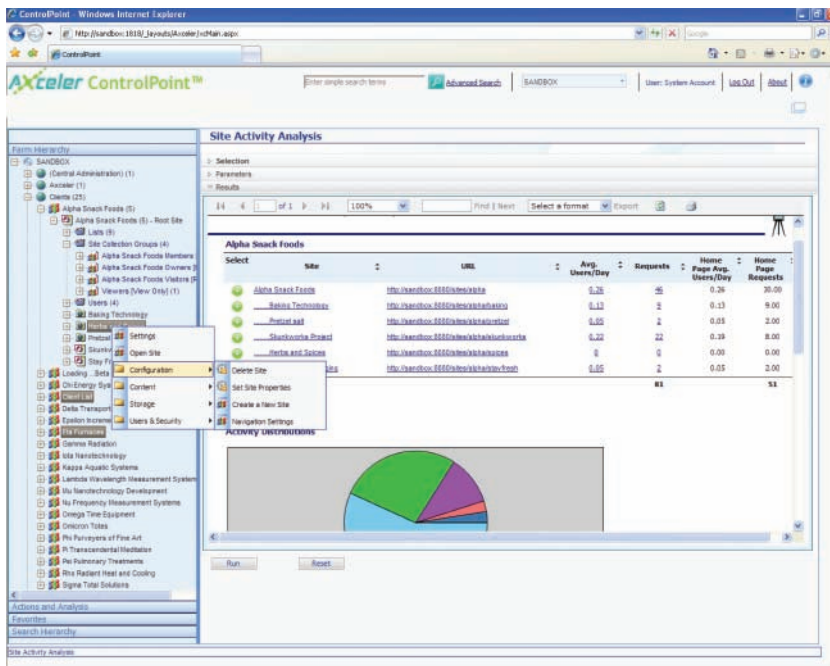
With ControlPoint, you now have the ability to identify sites that do not comply with your corporate policies, monitor the growth of sites, perform trend analysis on key metrics such as activity or storage, and even move/copy sites within or between farms. ControlPoint also includes proactive SharePoint management, detailed alerts, and automatic policy enforcement.

CONTROLPOINT BENEFITS

- Establish better control through permissions management, making sure that only the right eyes see the right content
- Quickly identify sites that do not comply with your policies so you can correct them
- Move/copy sites, site collections, lists and libraries within your farm or across farms
- Proactively manage your environment with alerts and scheduled analysis
- Analyze and enforce the governance policies you’ve put in place
- Easily navigate to sites and perform any action or analysis
- Security trimmed architecture allows administrators to manage sites while only seeing what SharePoint permissions allow

“With ControlPoint, I feel better knowing about any changes in my environment immediately,” said Karen Floyd, City of Charlotte, NC. “Now I can react appropriately before problems can fester.”

“The ability to move sites is critical for us,” said Mike Herry, Twynham Schools. “We often move content across departments or from test to production environments, so this will save us a huge amount of SharePoint administration time.”



Since 1994, Axceler has helped enterprises address common yet critical administrative and development challenges, so organizations can maximize collaborative technology investments, improve business operations, and dramatically reduce administrative time and costs. For Microsoft SharePoint, Axceler delivers ControlPoint, which gives administrators the ability to explore, protect, analyze, and ultimately control their SharePoint environments. With ControlPoint, you can analyze and enforce permissions, clean up user accounts, isolate sites that are no longer needed, identify sites with the most or least activity, anticipate site growth, and more.



AXCELER

Corporate Headquarters

600 UNICORN PARK DRIVE
WOBURN, MA 01801
TOLL FREE: 866.499.7092
TEL: 781.995.0063
FAX: 781.287.0180

European Headquarters

7 SWALLOW PLACE
LONDON
W1B 2AG
UNITED KINGDOM
TEL: +44 (0)20.7850.0199
FAX: +44 (0)20.7850.0270
www.axceler.com
questions@Axceler.com

Capabilities & Features

Manage Permissions

- Perform a complete security analysis across your farm
- Set, delete, reassign, or duplicate user permissions
- Analyze permissions at any level of the farm, even down to the document level
- Identify permissions levels for users in both SharePoint and Active Directory groups.
- Clean up users who are no longer in Active Directory but are in SharePoint

Interactive Analysis and Reporting

- Interactive analysis, not just predefined or static reports
- Drill down or drill across to gain more detailed information
- Compare historic patterns and trends to better plan out your future requirements
- In-depth analysis of SharePoint Audit and Change logs

Analyze Usage and Activity

- Analyze activity down to the site, page, or document level
- Identify who is accessing which documents, including details on that activity (i.e. checking in a document, editing a document, or just viewing a document's properties)
- Isolate sites that are no longer needed and delete them
- Compare activity from the past to help anticipate the future
- Find sites with the most or least activity

Analyze Content and Storage

- Monitor and track the growth of sites for better planning
- Analyze web part usage to determine which sites are using which web parts
- Ensure consistent branding and behavior: site themes, quotas, regional settings, etc.

Proactive Management

- Automatic alerts to critical changes in your environment
- Know immediately when a site is added or deleted or a site's permission settings changes
- Enforce policies to maintain standards
- Schedule any analysis or action

Move or Copy Sites within Farms or Across Farms

- Move site collections, sites, lists, and libraries
- Quickly go from test environment to production environment
- Reorganize your environment as part of an architecture change or a business change

Smarter Infrastructure

Efficient SharePoint Management

- Manage and control multiple sites, site collections, and web applications from one central location
- Advanced search lets administrators quickly and easily find sites to act upon
- Increase productivity with cross-site navigation and farm-wide administration
- Perform discovery/search functions across your SharePoint farm
- Scale to 10's of thousands of sites
- Avoid training hassles with easy to use, consistent user interface

Find it and Fix it

- Analyze and then act immediately on results
- Avoid losing your context by switching between modules

Security Trimmed

- No additional security infrastructure to manage
- Leverage the security model you've already implemented in SharePoint
- Site administrators can only manage those sites to which they have access

Distributed SharePoint Management

- Limit administrative functionality available to business managers or lower level administrators
- Option to integrate all management actions into Site Settings
- Run reports from outside of ControlPoint

Integrated with SharePoint

- Installs into your farm as a browser based web application
- Easily navigate to any site, site collection, or web application from within ControlPoint
- Access any SharePoint administrative capabilities like Site Settings and Central Administration from within ControlPoint

System Requirements

ControlPoint runs within your SharePoint environment on systems that meet the following requirements: Windows Server 2003, 2008, with IIS activated, SharePoint 2007 with WSS 3.0 installed (MOSS is optional), and SQL Server 2005, 2008. Supports IE 6, 7 & 8. Also supports SharePoint 2007 Service Pack 2.